



JULY 2018

EIA Natural Gas Storage as of 06/29/18, as reported 07/06/18

Working gas in storage was 2,152 Bcf as of Friday, June 29, 2018, according to EIA estimates. This represents a net increase of 78 Bcf from the previous week. Stocks were 717 Bcf less than last year at this time and 493 Bcf below the five-year average of 2,645 Bcf. At 2,152 Bcf, total working gas is within the five-year historical range.

Projections are for the tenth net injection of the inventory replenishment season, for a net build of 75 Bcf which compares to the previous week's build of 66 Bcf. Last year there was a net injection into inventory of 60 Bcf while the five-year average showed a net injection of 70 Bcf for the same week.

The natural gas market is up following the gas storage report.

Working Gas in Underground Storage, Lower 48

Working gas in underground storage, Lower 48 states

Region	Stocks billion cubic feet (Bcf)				Historical Comparisons			
	06/29/18	06/22/18	net change	implied flow	Year ago (06/29/17)		5-year average (2013-17)	
					Bcf	% change	Bcf	% change
East	460	430	30	30	560	-17.9	569	-19.2
Midwest	455	425	30	30	696	-34.6	614	-25.9
Mountain	139	133	6	6	187	-25.7	163	-14.7
Pacific	257	251	6	6	286	-10.1	302	-14.9
South Central	841	835	6	6	1,141	-26.3	997	-15.6
Salt	245	252	-7	-7	333	-26.4	288	-14.9
Nonsalt	596	583	13	13	808	-26.2	710	-16.1
Total	2,152	2,074	78	78	2,869	-25.0	2,645	-18.6

[EIA NATURAL GAS STORAGE AS OF 06/29/18, AS REPORTED 07/06/18](#)

[WORKING GAS IN UNDERGROUND STORAGE, LOWER 48](#)

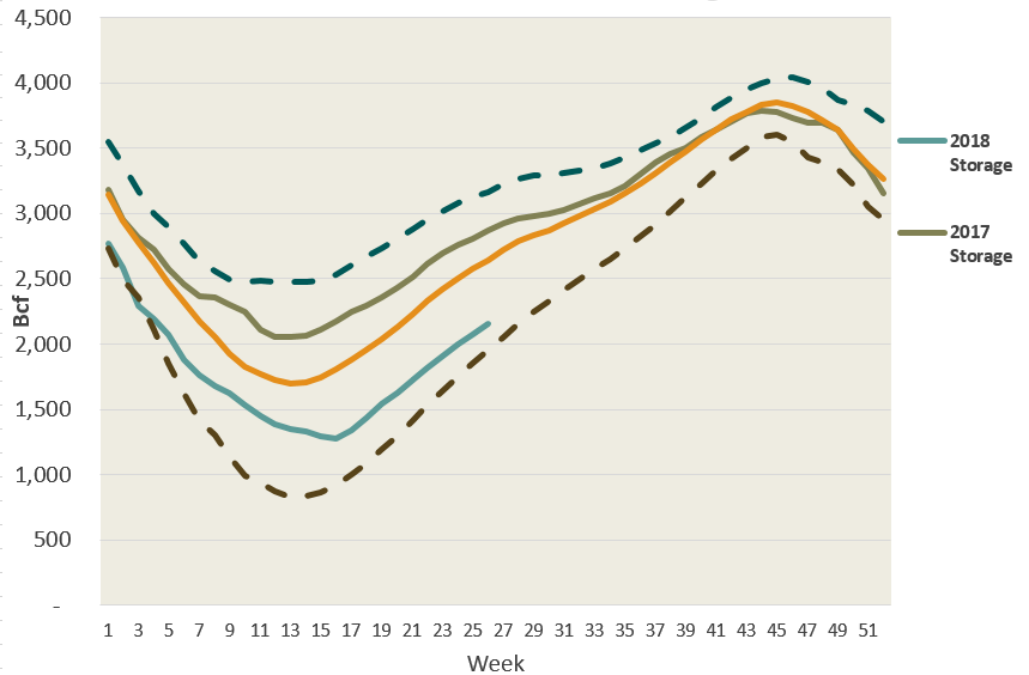
[2018 STORAGE VS. HISTORICAL STORAGE](#)

[CURRENT MARKET](#)

[SHARE THIS EMAIL](#)

2018 Storage vs. Historical Storage

2018 EIA Natural Gas Storage



Current Market

	Last	Change	Previous	2014 Trading Low	2015 Trading Low	2016 Trading Low	2017 Trading Low	2018 Low vs. Last
Aug-18	\$2.845	\$0.008	\$2.837	\$3.891	\$2.772	\$2.480	\$2.792	\$0.053
12 mos	\$2.834	\$0.003	\$2.830	\$3.959	\$2.830	\$2.549	\$2.794	\$0.040
24 mos	\$2.778	\$0.003	\$2.775	\$4.040	\$2.889	\$2.573	\$2.801	-\$0.023
36 mos	\$2.729	\$0.002	\$2.727	\$4.111	\$2.942	\$2.615	\$2.800	-\$0.071
2018	\$2.869	\$0.005	\$2.864	\$3.959	\$2.830	\$2.549	\$2.794	\$0.075
2019	\$2.780	\$0.000	\$2.779	\$4.120	\$2.927	\$2.598	\$2.784	-\$0.005
2020	\$2.677	\$0.004	\$2.673	\$4.255	\$3.047	\$2.691	\$2.745	-\$0.069
2021	\$2.619	\$0.000	\$2.619	\$4.370	\$3.182	\$2.813	\$2.736	-\$0.117
2022	\$2.647	\$0.000	\$2.647	\$4.431	\$3.340	\$2.900	\$2.757	-\$0.110

Not Interested anymore? [Unsubscribe](#)